

Anti-IL-11RA hlgG1 Antibody(58B10-9C3-4E5)

Product information

GM-57287AB-10	10 µg
GM-57287AB-100	100 µg
GM-57287AB-1000	1 mg

Antibody Information

Species Reactivity	Human;
Clone	58B10-9C3-4E5
Source/Isotype	Monoclonal human IgG1, κ
Application	Flow cytometry
Specificity	Detects IL-11RA
Gene	IL-11RA
Other Names	CRSDA
Gene ID	3590(human);
Background	Interleukin 11 is a stromal cell-derived cytokine that belongs to a family of pleiotropic and redundant cytokines that use the gp130 transducing subunit in their high affinity receptors. This gene encodes the IL-11 receptor, which is a member of the hematopoietic cytokine receptor family. This particular receptor is very similar to ciliary neurotrophic factor, since both contain an extracellular region with a 2-domain structure composed of an immunoglobulin-like domain and a cytokine receptor-like domain.
Storage	Store at 2-8°C short term (1-2 weeks).Store at ≤ -20°C long term. Avoid repeated freeze-thaw.
Formulation	Phosphate-buffered solution, pH 7.2.
Endotoxin	< 1 EU/mg, determined by LAL gel clotting assay

Data Examples

Flow cytometry

H_IL11 Reporter 293 Cell Line (Catalog # GM-C27771) was stained with Anti-IL-11RA hlgG1 Antibody(58B10-9C3-4E5) (Catalog # GM-57287AB) or isotype control antibody, followed by anti-Human IgG APC-conjugated Secondary Antibody.

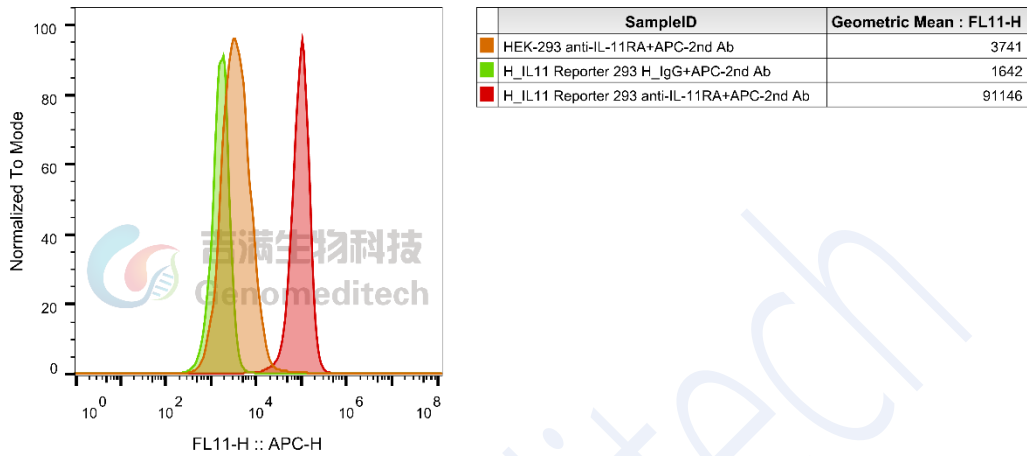


Fig. FACS